

CERTIFICATE OF LOCATION OF GOVERNMENT CORNER

NORTH QUARTER Corner of Section 35, Township 105N, Range 42W
 5th Principal Meridian, State of Minnesota, County of Murray.

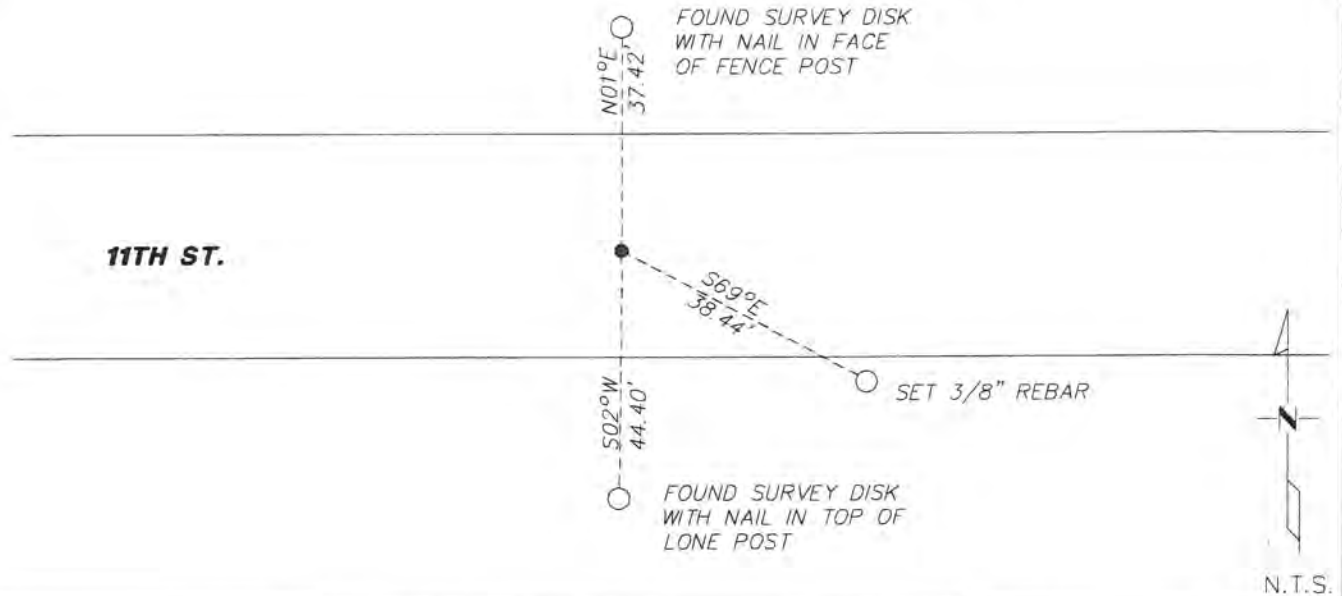
At the corner location shown on the sketch:

On 05/16/19 found a rebar with cap stamped Martin LS 12957.
DATE

left monument as found lowered monument removed monument (explain)

On _____ placed a _____
DATE

SKETCH OF REFERENCE TIES



Statement of evidence for this corner location is on back of this page.

I hereby certify that this document was researched and prepared by me or under my direct supervision and that I am a licensed Land Surveyor under the laws of the State of Minnesota.

Signature *K.W.L.*
 Date 6/27/19 License No. 49563

Title:

- Land Surveyor Professional Engineer
 County Surveyor County Engineer

OFFICE OF THE COUNTY RECORDER

County of Murray

I hereby certify that this document was filed in the Co.

Recorder's office at 9:00 A.M. on the 8th day of July A.D. 20 19

County Recorder *Evelyn Larson*

by _____, Deputy

DOCUMENT NO. —

Statement of Evidence:

North Quarter corner of Section 35, Township 105 North, Range 42 West, 5th Principal Meridian, Murray County, Minnesota.

- 1901 Murray County section notes show they located a 8x10x14" stone. Measured 2657.5' to the NW corner of Sec. 35.
- 2015 Tim Laleman, LS 51702, found a 1/2" rebar with yellow surveyor's cap stamped "Martin 12967", ±2' north of centerline, 11" below gravel surface. Monument falls in line with fences north and south. Set 3 ties and established coordinates.
- 2019 Westwood Professional Services searched area and found a capped rebar stamped "MARTIN LS 12967", down 1'. Monument lies 0.5' south of a E-W centerline and fits occupation to a fence line to the north and south. Found 2/3 ties from 2015 corner record. Fits distance within 1.5' from 1901 survey measuring to the NW corner of Sec. 35.

Analysis of the recovered data, field evidence and survey measurements, indicates that the monument found is the correct perpetuation of this corner. For additional information concerning this corner please contact Westwood Professional Services.